

PROJECT: _____

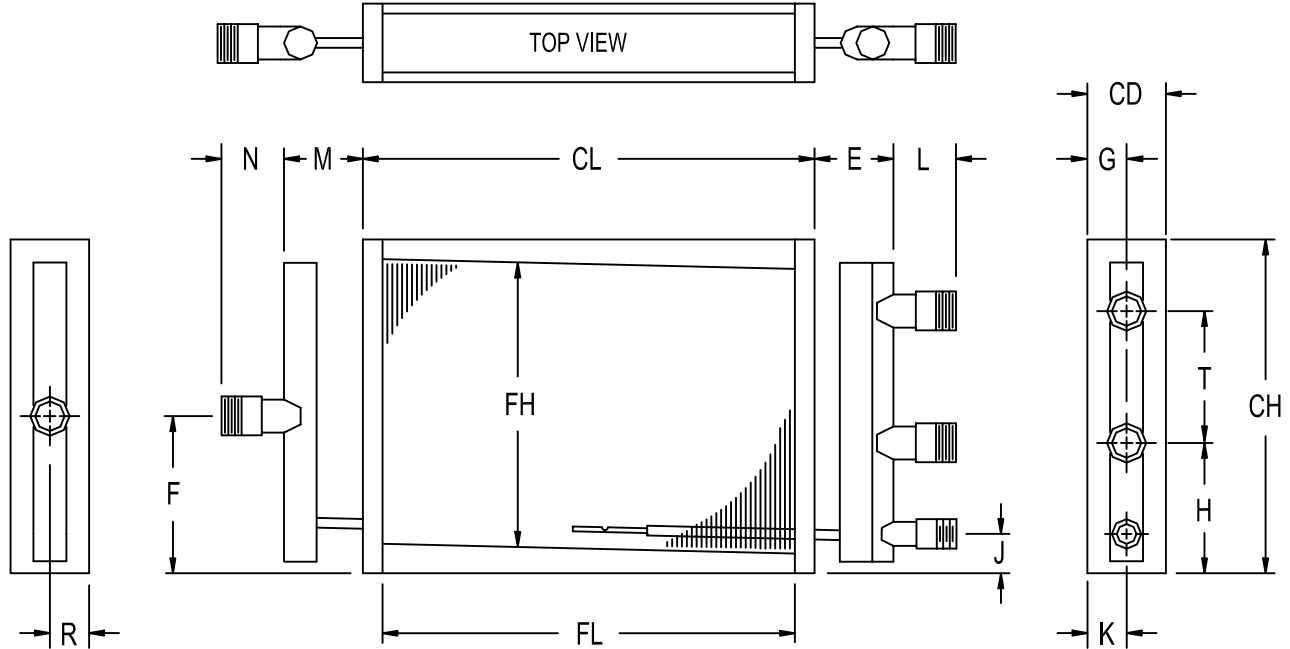
ITEM #: _____

QTY: _____

TAG #: _____

Replacement Coil Order Form

DISTRIBUTING STEAM COIL



NOTE: Mark out opposite end header if dual headers are not required

FH	FL	CH	CL	CD	E	F	G	H	J	K	L	M	N	R	T

ROWS (1 OR 2)		TUBE MAT'L: (CIRCLE THICKNESS)	FIN MAT'L (CIRCLE THICKNESS)
TUBES HIGH		COPPER: (.025 .028 .035 .049 .065)	ALUM.: (.008 .010 .016 .020 .025)
TUBES O.D. (5/8" OR 1")		STEEL: (.035 .049 .065)	COPPER: (.007 .010 .016 .020 .025)
FIN TYPE (Flat Or Turbex)		SST: (.035 .049)	SST: (.008 .010)
FINS PER INCH		CU/NI: (.035 .049)	CU/NI (.007 .010)
AIR FLOW (H OR V)			STEEL (.010 .016)

TUBE ORIENTATION (H OR V) CASING MATERIALS: (Galvanized Stainless Steel)

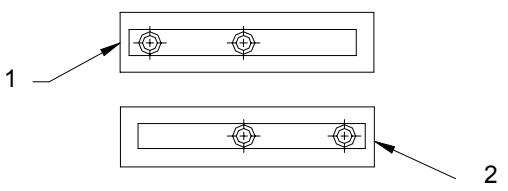
CORE PITCHED? (Y OR N) CONNECTION MATERIAL: (Steel Copper Stainless Steel Brass)

CONNECTION SIZES STEAM COND CONN. TYPE : (MPT FPT Plain End Other: _____)

SPECIAL OPTIONS: (Duct Mounting Holes Header Enclosure)
 COATINGS: (Electrofin or Phenolic) PRIORITY SHIPMENT: (5 Day 10 Day 15 Day)

VERTICAL AIR FLOW ORIENTATION

Specify the condensate connection location



NOTES
